

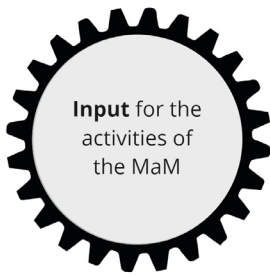
# Appendix D

Change model Mind-and Makerspace

Howest, University of applied sciences

Bruges (Belgium)

# What we do



Project related financing of the MaM

Project related subsidies and private donations

Infrastructure, human resources, knowledge and research of Howest

Engagement, time, expertise and financing from partners

Engagement, time and expertise from MaM-team and freelancers

Engagement, time, expertise and financial contribution from users

**Learn, dare, make, share & care**

Build a trans disciplinarian and inclusive community

Organise and manage space, machines, materials and other sources within the MaM

Lifelong learning activities : short-term activities and long-term trajectories. As well open workplaces, workshops, events, activities on demand as self guided activities.

We offer a platform for learning, sharing of knowledge and matchmaking for individuals and organisations inside or outside

Organise and facilitate (common) projects and co-operation

Sensitization and communications actions

**Everybody is welcome, from inside and outside**



The user shares knowledge, experience, network and materials with others in the MaM

The user utilises knowledge, tools, durable materials and infrastructure of the MaM

The user gets (customised) guidance and coaching from the MaM network

The user participates in activities and offer of the MaM

Expertise, tools and methodologies to develop transformational skills

Encounters between divers individuals, groups and organisations inside or outside Howest

Common projects and co-operations between (local) individuals, groups and organisations

Encounters between the work field and Howest students and colleagues

Learn users to know Howest

Extension of the MaM community

Make expertise, space and infrastructure of Howest accessible for a broad public

JUSTIFICATION

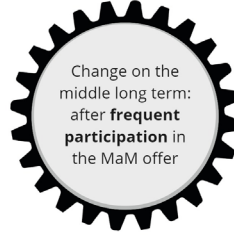
## 21st century skills with focus on 4C's Inner Development Goals

Social and creative entrepreneurship  
Talent and power focussed acting  
Theory of creative ability  
Trans disciplinarian thinking

Transition and impact focussed acting  
STEAM appreciation and enthusing  
Sharing culture

# What we want

# That is why



**SELF DEVELOPMENT AND CRITICAL THINKING**  
Everybody looks with confidence and a broad view at himself, the others and the world.

**SHARING AND CO-OPERATING**  
Everybody feels connected to the others and the world and co-operates in shaping the future. Empathy and sharing are obvious.

**CREATIVE ABILITY**  
Thinking and acting together in a creative way brings along new shared knowledge to shape the world

**SHOW COURAGE AND TAKE INITIATIVE**  
Everybody is convinced of a resilient, socially just world within the boundaries of the planet and translates this into action.



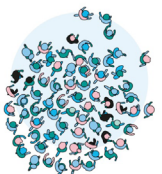
We want to see **individuals** who

Learn to know one's self better, recognise and acknowledge successes, embrace failures	Be conscious of one's own creativity	Look at the world with a broad view and have more confidence	Use creativity to achieve goals
Experience added value of sharing and co-operation with others	Experience that what they do matters	Feel more connected to others & take initiative to share and to co-operate	Take initiative to trigger change together with others



We want to see **organisations** which

Reflecting on their why-how-what, seeing opportunities to increase impact	Detect and use opportunities to increase innovative ability	Chose goals and strategies that contribute to a resilient, socially just society within the boundaries of the planet	Co-create with others, connect various talents and domains of expertise
Experience added value of sharing and co-operation with others	Experience that what you do matters an become conscious of the systems that you are part of	Establish strong co-operations with others to realise social impact	Develop and follow strategies to realise social change



We want to see a **college** which

Reinforce individuals and organisations in their possibilities and dreams	Assure space, guidance and support to develop creative abilities of students and colleagues	Chose goals and strategies that contribute to a resilient, socially just society within the boundaries of the planet	Find a trans-disciplinary approach in the offer obvious
Bring together and exchange expertise and space with individuals and organisations inside and outside of Howest	Bring together and exchange expertise and space with individuals and organisations inside and outside of Howest	Initiate and facilitate co-operations inside and outside Howest	Initiate and facilitate actions with a community of internal and external dreamers and doers

**Developing transformative skills to initiate change in the world**

<b>CONTEXT</b>	<b>Strategic goals of Howest '22-'28</b>	<b>Is locally anchored in Bruges</b>	<b>Transition</b>
	Needs within Howest	Need of space for creativity	A fast changing world makes sustainable transitions indispensable e.g. SDG's
	Educational innovation	Bruges as a city for craftsmanship and makers	Measuring of the impact
	MaM as hub	Entrepreneurial city	Lifelong learning
	Connecting is crucial	Policy of the city - sustainability	
		Initiatives that live in the city	